

# Two Years On: the Traveller Commissioning Strategy in Action 2013/14

## Foreword

Welcome to our second Traveller Commissioning Strategy update which lets you know about some of the progress we have made and some of the challenges we have faced during the second year of its implementation.

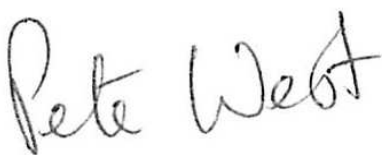
Our strategy is a partnership between the Council, Clinical Commissioners Group (NHS) and the Police to tackle the fundamental inequalities Traveller communities face and the impact that unauthorised encampments have on local communities and Travellers. We are committed to taking a firm and fair approach that will not only reduce the inequalities experienced by Travellers but will also support community cohesion.

We have been working closely with the South Downs National Park to progress our proposals for the new permanent site at Horsdean and our planning application has now been approved. The permanent site is critical to expanding our city's provision to help minimise the impact of unauthorised encampments. We expect work to be completed early in 2016.

However, the development of the new Horsdean site will pose a challenge for the city through 2015 as we will have to close the transit site during the works. Our proposal for a temporary site was rejected which means there will be nowhere for visiting Travellers to stop. This is expected to lead to an increase in unauthorised encampments and the council's Traveller Liaison Team will be working closely with the Police to minimise the disruption caused by this.

To help tackle the lower life expectancy, poor health and educational attainment faced by Travellers when compared to the general population, the CCG are using the findings of their Traveller engagement to help identify priorities and actions for health services in their new Operating Plan and the Council has set up a new City Traveller Education Unit. These changes are allowing services to build trust with Travelling communities to raise awareness and improve the take up of services to help reduce inequality.

Whilst next year is likely to be a difficult one due to the disruption caused by unauthorised encampments, the opening of the new site in 2016 will mean this is short-lived and Brighton & Hove will have taken a major step in increasing its pitch capacity to help tackle unauthorised encampments and meeting our duty of care to some of the city's most disadvantaged citizens.



Councillor Pete West

Chair of Environment, Transport & Sustainability Committee

## Our Strategy

The city's **Traveller Commissioning Strategy 2012** was approved by the Council in March 2012 with a vision of:

***Balancing the needs of Traveller communities and the City's settled communities to reduce inequality and improve community relations***

Our strategy is split into 4 key priority areas aimed at supporting Travellers to improve the quality of their lives and reduce the tensions between communities:

- Improve site availability
- Improve health, safety and wellbeing
- Improve education outcomes
- Improve community cohesion

Action to address these priorities will help ensure we have adequate Traveller pitch provision to improve stability for those Travellers living in and visiting the city. This will help Travellers access education and health services more effectively and also reduce pressures on the city's parks and open spaces to tackle anti-social behaviour and improve community cohesion.

Development of Traveller Commissioning Strategy was done in stages that gave us that opportunity to engage and consult with residents, Travellers, Community & Voluntary Sector Organisations, service commissioners and providers, community champions, pressure groups and others.

The Traveller Commissioning Strategy has not been developed in isolation but has involved services across the Council and beyond. Our partnership approach brought together the Council, NHS Sussex, Traveller Education Team and Sussex Police.

In addition the Environment & Community Safety Overview & Scrutiny Committee Traveller Strategy Scrutiny Panel shadowed the development of the strategy from the outset and recommendations submitted by the panel were integrated into the final strategy.

The Scrutiny team won the Centre for Public Scrutiny award for Innovation (for the second year running) for its work on the scrutiny panel set up to shadow the development of the new Traveller Strategy.

Our strategy has identified the importance of developing a regional approach to tackle Traveller inequality and the shortage of suitable stopping places, and a number of groups have been set up and consultation processes established to address cross boundary concerns and issues.

## Unauthorised Encampments

Government guidelines recognise that due to the national shortage of stopping places Travellers will continue to set up unauthorised encampments as they follow their traditional routes for seasonal work.

We want to provide a permanent site to free up space on the transit site. We know that this will not fully resolve the issue of unauthorised encampments and work closely with the Police to effectively manage encampments which happen.

Overall there were 52 unauthorised encampments in 2013/14, a decrease on 2012/13 but more than in 2011/12.<sup>1</sup>

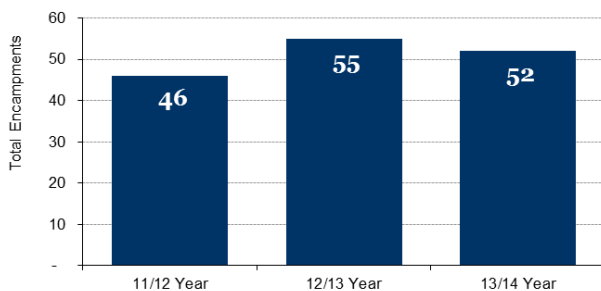
April to June 2013 saw a noticeable reduction in encampments when compared to the previous year, 11 instead of 26. However, there was a slight increase in from July to Sept (19 to 21) and Oct to Dec (10 to 12) and a large increase between January and March 2014 (4 to 10).<sup>2</sup>

On average, encampments are moved on after about a week which helps to ensure residents are able to get back to enjoying their green spaces as quick as possible. However, moving encampments quickly can also lead to more encampments as groups fragment to other parts of the city.

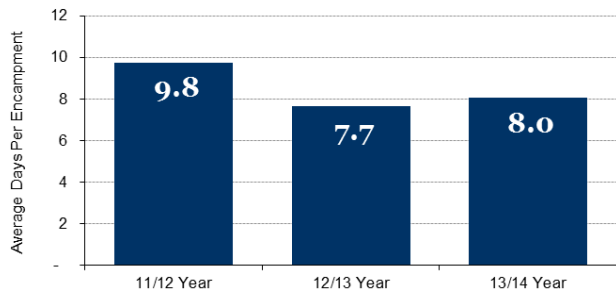
When making decisions with the Police about moving on an encampment we have to balance the needs of the community that has lost the use of it's open space, the welfare needs of the Travellers and also the likely impact that a fresh encampment will have elsewhere in the city.

When an encampment is present regular high profile visits by the Police and Council's Traveller Liaison Team help to reassure both residents and Travellers to minimise the disruption and anti social behaviour that sites can attract. A new waste contract helps to ensure that sites are effectively and swiftly cleaned.

Brighton & Hove  
Unauthorised Traveller Encampments  
Yearly Total



Brighton & Hove  
Unauthorised Traveller Encampments  
Average Days per Encampment



<sup>1</sup> These figures exclude Van Dwellers as they fall outside the scope of this strategy

<sup>2</sup> Quarterly figures total more than the annual number as some encampments start in one quarter and finish in another so are counted twice

# Outcome 1: Improve site availability

## Developing the New Permanent Site

In 2014, the plans for the new permanent site next to the existing transit Traveller site at Horsdean were approved by the South Downs National Park Authority.

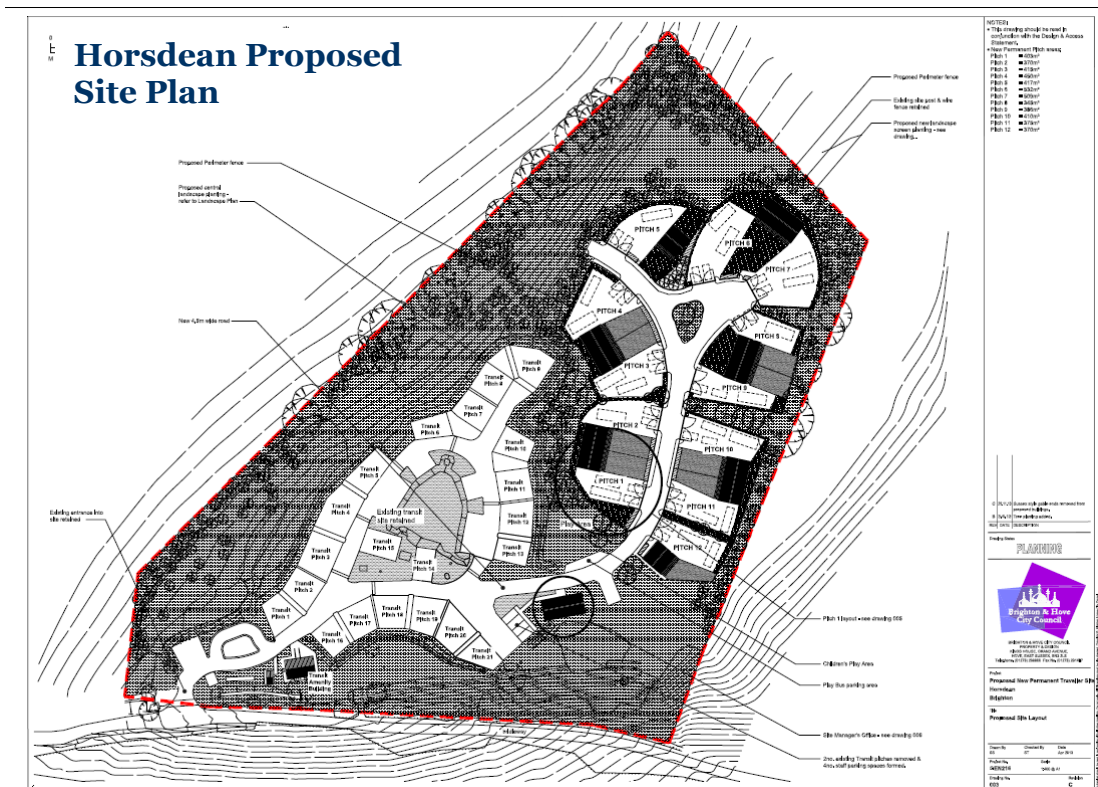
The site was chosen following an extensive selection process and will provide 12 new permanent pitches that will provide space for a static caravan and other vehicles with a kitchen, bathroom and dayroom provided in an amenity block.

The approval of the plans for this new site has been a lengthy process with extensive consultation, not only by the council but also by the South Downs National Park Authority (SDNPA).

Development of the new site can now go ahead after the decision of the Communities and Local Government secretary not to call in the plans.

Detailed work has been undertaken to ensure that the design of the site will not only meet the needs of Travellers but will not spoil the natural beauty of landscape.

A value engineering exercise has been undertaken to reduce construction costs and these will be the subject of a planning application for minor modifications to SDNPA, along with applications for the discharge of various planning conditions.

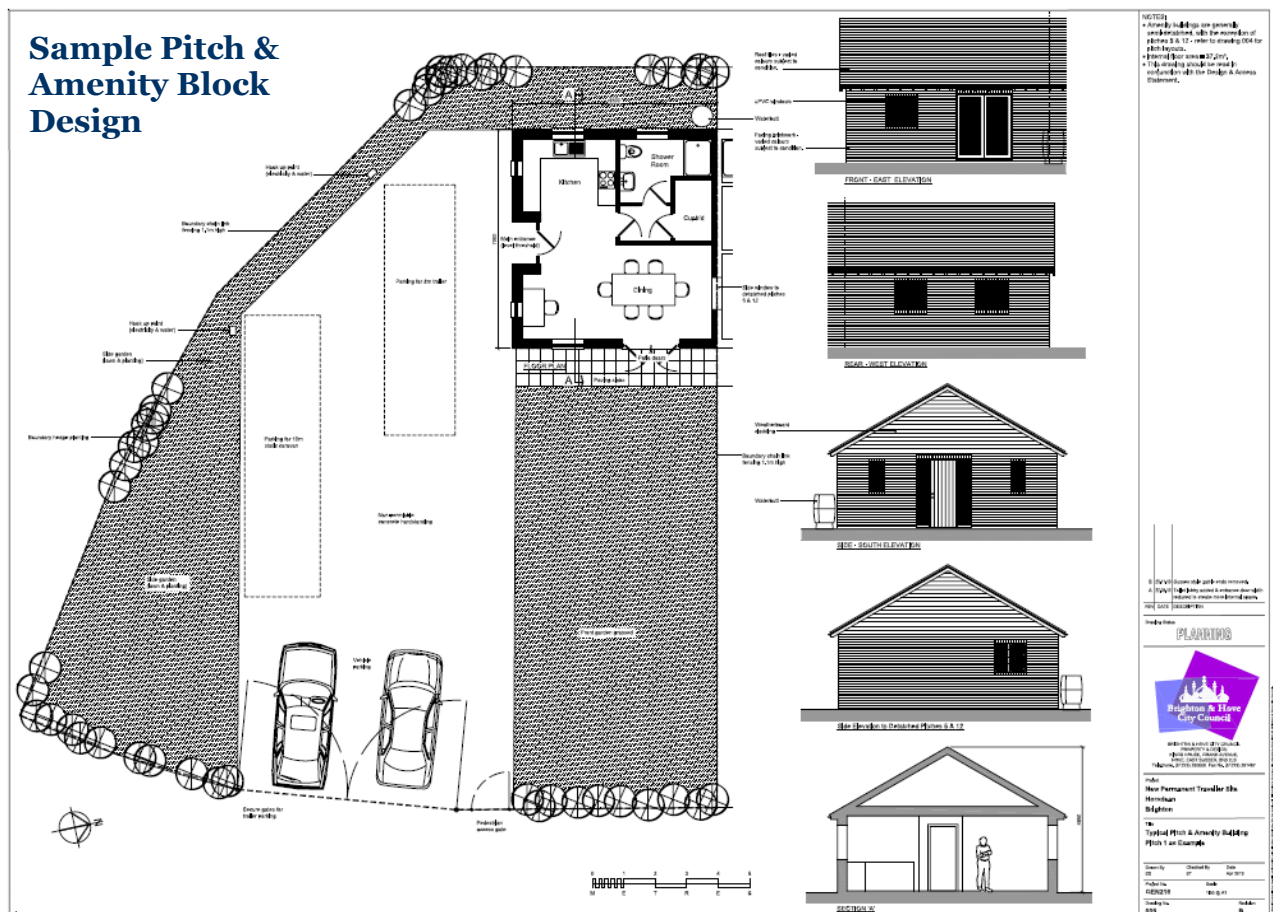


The permanent site will bring stability to Traveller families wanting to live a more settled lifestyle and reduce the likelihood of unauthorised encampments by freeing up pitches on the transitional site.

A management building will be provided for the Traveller Liaison Team to enable closer and better working with the Traveller communities and to reduce management costs.

The site is expected to be completed by early 2016 and provide homes for Traveller families with a local links to the community, many of who regularly occupy pitches on the transit site.

The Travellers will have secure tenancies that, like all social housing tenancies, will set down tenancy rules and requirements that tenants are required to adhere to, will pay rent and council tax.



## **Outcome 2: Improve health, safety and wellbeing**

### **Clinical Commissioning Group 2 Year Operating Plan**

Brighton & Hove Clinical Commissioning Group (CCG) has sought to capture the issues that face the different Traveller communities through engagement and consultation and address these issues in their operating plans. To facilitate this, the CCG has funded Friends, Families and Travellers (FFT) to engage with the Traveller communities and feedback on the specific issues raised by the communities.

The findings from the FFT Engagement Annual Report 2014 will be used to refresh the CCGs operating plan. This plan will shape the services by setting out the achievement to date, highlight challenges and articulating the deliverables for 2015/16. The plan will be consulted on in January 2015 and published in April 2015.

### **Violence against Women and Girls Strategy**

From 2014/15, domestic violence and sexual violence has been integrated into the overarching Violence against Women & Girls Strategy. In June 2014 the Annual Action Plan was approved by the VAWG Programme Board.

The Strategy and Action Plan include commitments to learn from capacity building work completed with BME women's groups to inform capacity building Gypsy and Traveller communities by developing women's peer education and similar programmes and to improve responses to domestic and sexual violence amongst Gypsy and Traveller communities; this includes ensuring any new site development addresses the safety needs of women and children in its design

## **Outcome 3: Improve education outcomes**

### **New Traveller Education Unit**

The council is in the process of establishing a new City Traveller Education Unit following termination of the contract with East Sussex County Council. The unit will provide more resources to address Traveller children's access to education and attendance at school together with resources to inform and support schools' in their responsibilities for Traveller children and their families. Although there has been continued outreach to engage Traveller children and their families in

education, some of the outreach has had to be scaled down while the new unit is in the process of being fully set-up. The development of the new 'in-house' unit has enabled a re-evaluation and reorganisation of support for Traveller pupils and families and opportunities for greater participation from social care has seen the introduction of a designated social worker for Traveller families with other specialist outreach health and education workers.

## **Outcome 4: Improve community cohesion**

### **Managing Encampments**

In 2014, Sussex Police's Operation Monza was reviewed in response to the need for a more flexible approach with a seamless link between the Police Gypsy & Traveller Liaison Officer, neighbourhood policing teams and council Traveller Liaison Team.

The Officer, with support from the neighbourhood policing team manage unauthorised encampments in the city, supporting the council and fulfilling the responsibility outlined within the Community Reassurance Plan.

Ongoing sharing of information and good practice within the city and across the region is facilitated through regular meetings. The Traveller Liaison Team attends monthly meeting with other frontline staff working with Travellers and bi-monthly strategic meetings with support services to ensure effective joint working and best delivery of services to Travellers. Good practice across the region is shared with other professionals working with Travellers at quarterly Pan Sussex Gypsy and Traveller meetings.

A new Community Impact Assessment protocol and recording form, developed by the council, is now in use. On the arrival of a new encampment, a site assessment and community impact assessments are carried out with the neighbourhood Policing team to ensure that appropriate action is taken on a 'case by case' basis, taking into account relevant issues.

For both the Police and council, 2015 will provide significant challenges. The potential lack of a transit site due to the development of the permanent site, will undoubtedly increase the number of unauthorised encampments and prevent use of powers under S62A.

### **Community Safety Casework Team**

Direct outreach work and contact with the traveller communities and equipping front line professional with appropriate information are being used to increase trust and confidence, create awareness of the reporting mechanisms, and support available in the city to increase reporting. During two visits to the traveller encampments, further 7 racist incidents were anecdotally reported to the caseworker directly. Caseworkers have also attended four meetings of women travellers (with 20 – 30 travellers in attendance) to build trust and increase reporting.

As a result of partnership with Traveller Liaison Team, in 6 cases between August 2013 and September 2014, members of public who contacted the Traveller Liaison Team and were racially abusive towards travellers were given warnings by either the police or the Community Safety Casework Team or by both the agencies. In such instances, the perpetrators language and prejudices were challenged and as a result there have not been any further reports of repeat offending by any of them.



## Outcome 1: Improve site availability

| Strategic Action   | Target  | Current Position  | Lead Partner   |
|--|---|---|--|
| <b>Goal 1</b>  | <b>Develop a new permanent Traveller site</b>                           |   |  |
| Consult on preferred site prior to planning application  | March - April 2012  | Complete: preferred site identified and local consultation taken place  | Brighton & Hove City Council                             |
| Obtain planning permission for preferred site  | Updated timescale: Application delayed from 2012 to 2013                | Planning permission obtained in June 2014 from South Downs National Park Authority. Work about to commence on discharging planning conditions | Brighton & Hove City Council & South Downs National Park |
| Develop site   | Subject to planning permission  | Expected development 2015 to 2016   | Brighton & Hove City Council                             |
| Develop allocations and management policies  | Subject to planning permission  | Allocations policy for the permanent site has been developed and management policies are being updated  | Brighton & Hove City Council                             |
| Open site  | Subject to planning permission  | Expected opening now late 2015 / early 2016   | Brighton & Hove City Council                             |
| <b>Goal 2</b>  | <b>Ensure effective management and use of the Horsdean Transit Site</b> |   |  |
| Appoint a site warden for the Horsdean Transit Site  | Recruitment planned for Spring 2012                                     | Following a restructure of the Traveller Liaison Team, 2 Site & Support Officers recruited  | Brighton & Hove City Council                             |
| Review occupancy of the Transit Site to provide capacity to help minimise unauthorised encampments | Spring/Summer 2012 (and ongoing after)                                  | Capacity of the site has been restricted to 10 pitches due to the on-going drainage issues.   | Brighton & Hove City Council                             |
| Improve the collection of fees and service charges and deal effectively with arrears               | Summer 2012 (and ongoing after)   | Will be further improved with the redevelopment of the site - all rents and service charges will be reviewed                                  | Brighton & Hove City Council                             |

| Strategic Action   | Target  | Current Position   | Lead Partner                 |
|--|---|--|------------------------------|
| <b>Goal 3    Develop procedures for Tolerated sites</b>  |   |  |                              |
| Research Good Practice and develop guidance on toleration  | Spring 2013   | Research has been concluded and a toleration protocol developed and implemented  | Brighton & Hove City Council |
| Consult and Equality Impact Assessment   | Subject to guidance   | Consultation on the Toleration protocol and EIA completed  | Brighton & Hove City Council |
| Implement  | Subject to guidance   | Toleration protocol has been implemented   | Brighton & Hove City Council |
| <b>Goal 4    Consider the need for future site provision</b>   |   |  |                              |
| Traveller accommodation needs assessment   | Subject to guidance but required to plan for post 2016 need                         | New GTAA Commissioned with adjoining East Sussex District Councils and South Downs National Park Authority. Publication due by December 2014 | Brighton & Hove City Council |
| Monitor size, duration, frequency, make up of unauthorised encampments                                   | Build up a picture of need and demand particularly once permanent site open         | All aspects of unauthorised encampments continue to be monitored and reported back to members  | Brighton & Hove City Council |
| Implement further requirements of new government planning guidance                                       | Subject to guidance   | Updated GTAA will provide revised pitch requirements for City Plan period  | Brighton & Hove City Council |
| Plan according to new guidance   | Subject to guidance   | In progress: Traveller Accommodation Policy CP22 reflects new guidance   | Brighton & Hove City Council |
| Ensure new City Plan recognises identified needs to 2016 and the need to consider future needs provision | Plan proposed adoption end 2013   | In progress: City Plan sets out requirements to 2019 and commits to further needs assessment for remaining Plan period.                      | Brighton & Hove City Council |
| <b>Goal 5    To provide advice to Travellers seeking to buy their own land for developing a site</b>     |   |  |                              |
| Planning advice to travellers seeking to buy their own land for developing a site                        | Appropriate advice provided as and when required to build on existing good practice | No approaches received from Gypsy or Traveller groups to develop their own sites   | Brighton & Hove City Council |

## Outcome 2: Improve health, safety and wellbeing

| Strategic Action   | Target   | Current Position   | Lead Partner                              |
|--|--|--|---|
| <b>Goal 6</b> <b>Improve access to health and other support services for Travellers in the city</b>  |  |  |   |
| Conduct specific needs assessment on the health and wellbeing of Travellers  | November 2012  | Complete: The needs assessment was carried out during summer 2012  | Public Health & NHS Sussex                |
| Develop an action plan in response the findings of the needs assessment in order to improve access to healthcare services for members of the G&T Community   | March 2013 (and ongoing)                             | Brighton and Hove CCG funded Friends, Families and Travellers to engage with Traveller communities Findings will shape the operating plan for 2015/16 and future plans | Clinical Commissioning Group              |
| Citywide review of Health Visitors to include the impact on the Travelling community   | 2012/14  | Ongoing: Health visiting commissioned by NHS England and this will be taken forward through the Local Implementation Plan  | NHS Sussex & Brighton & Hove City Council |
| <b>Goal 7</b> <b>To improve cultural awareness in health services</b>  |  |  |   |
| Cultural awareness training for Clinical Commissioners Group staff and lead clinicians   | April 2013   | Complete and included in the Annual Operating Plan for 2013/14.<br>Planning a Protected Learning Scheme took place in November 2013                                    | CCG & NHS Sussex                          |
| <b>Goal 8</b> <b>To improve ethnic monitoring in health and other services to include Travellers</b>   |  |  |   |
| The Trust will ensure that all service providers are aware of the monitoring framework and use it to monitor service uptake and experience in order to identify key issues for Traveller communities | Ongoing – to be reviewed as part of needs assessment | E&D Action plan reviewed and updated each year to improve monitoring   | NHS Brighton & Hove                       |

| Strategic Action  | Target   | Current Position   | Lead Partner  |
|---|--|--|---|
| <b>Goal 9 Tackle domestic and sexual violence</b>   |  |  |   |
| Integrate actions to address domestic and sexual violence in Traveller communities into DV and SV Action Plans and in the Violence Against Women & Girls Strategy         | Plan in place April 2012   | Completed: Domestic violence and sexual violence integrated into overarching Violence against Women & Girls Strategy from 2014-15<br><br>Ongoing: Needs of Traveller communities to be included in the future domestic and sexual violence specialist services Commissioned for 2015               | Safe in the City Partnership                                  |
| Develop a package of support for Travellers subject to the overall needs within the DV Commissioning Plan, SV Action Plan and the Violence Against Women & Girls Strategy | To be developed in 2012/13   | Ongoing: Working with Friends, Families and Travellers to develop an Action Plan of awareness raising and resources for professionals<br><br>Complete: Provision of support to Traveller community included within the future Domestic and Sexual Violence Specialist Services Commission for 2015 | Safe in the City Partnership working with other organisations |
| Integrate work of Traveller Education Team (Goal 13) with Healthy Schools Team work on gender equality / domestic and sexual violence prevention                          | 2012/13. Integration of awareness and education work. Clear pathways to services for young people for Traveller children needing support | Ongoing: Planned review of Preventative Education Project due in January 2015, which will incorporate options for work with Traveller Education Team (Goal 13)   | BHCC Healthy Schools Team                                     |

## Strategic Outcome 3: Improve education outcomes

| Strategic Action   | Target  | Current Position  | Lead Partner   |
|--|---|---|--|
| <b>Goal 10</b>   | <b>Raise standards by ensuring successful education provision for Traveller children</b>  |   |  |
| New families are visited by Outreach Team to engage with families, assess need according to age and arrange admission into local school  | 1) All pre school children are engaged<br><br>2) All school aged children enrolled in local provision   | Outreach continued to engage families in education.<br><br>High % of children from unauthorised encampments not engaged | Traveller Education Team   |
| Children are supported into new school by peripatetic teacher  | Successful admission and inclusion into new school  | New peripatetic teacher (Sept 14) Best practice adopted and applied   | Traveller Education Team   |
| Home school liaison provided by outreach team and Education Welfare Service to ensure good attendance  | All children in school with attendance over 90%   | Attendance for short stay 2013/14 - 67% actual / possible. Annual Report 2014   | Traveller Education Team & Education Welfare Service             |
| Support provided to local school and their communities closest to new site via <ul style="list-style-type: none"> <li>training re cultural awareness and successful practice in integrating Traveller children</li> <li>additional teaching support to Traveller children with learning deficit</li> </ul> | 1) All receiving schools cultural awareness training and educational resources<br><br>2) New Traveller children settled in schools and support plans in place where necessary | Ongoing: focus once site building commences and end date a reality  | Traveller Education Team   |
| Collaborate with voluntary sector and families to provide/access out of school activities  | New children integrating into local community   | Ongoing - current v short stays mitigates against integration   | Youth Service, Traveller Education Team, Traveller Organisations |

| Strategic Action   | Target   | Current Position   | Lead Partner  |
|--|--|--|---|
| <b>Goal 11     Raise the engagement with learning opportunities for all traveller families visiting Brighton and Hove</b>  |  |  |   |
| To continue to provide a specialist/outreach provision to support all Traveller families to access learning opportunities  | Increase uptake in local provision including family learning   | No additional adult/family learning during 2013/14   | Traveller Education Team  |
| To provide additional teaching support for those with learning deficit (due to mobility)   | Improvement in attainment - Foundation Stage, KS2 and 4  | No improvement in participation or attainment due to greater turbulence in movement of families plus change of contract with ESCC  | Traveller Education Team & Schools  |
| To offer alternative education provision where required for 14-19 secondary aged pupils  | Improved uptake of educational opportunities   | Although interest expressed in vocational courses, there has been no uptake. The new permanent site should enable uptake   | Traveller Education Team & Engagement Team  |
| Involve Traveller groups in education services development   | Consult with local Travellers  | Ongoing requests from Traveller families for outreach provision via mobile unit. We are in the process of sourcing a suitable replacement vehicle.   | Traveller Education Team & Schools/Nurseries  |
| <b>Goal 12     Secure engagement of families from the early years</b>  |  |  |   |
| To deliver weekly outreach under 5s play sessions to all families using the Traveller education team playbus in partnership with health and other professionals. | To engage all newly arrived families with mainstream services. eg children centres, early years settings and specialist services eg speech and language therapists | Greater participation from social care with families in need. Children's Services In process of sourcing new vehicle for range of educational and health needs                             | Traveller Education Team & Health visitors  |
| To provide a parent and under 5s drop-in group for Traveller parents on site   | Attendance and participation in the bespoke group within Children's Centre and to increase participation and inclusion in wider children centre activities         | Families linked into and attended Children's Centre for -5 activities and advice but attendance not sustained. Requested "on site" provision. To be revisited when new site is opened 2015 | Early Years Coordinator<br><br>Traveller Education Team<br><br>Moulsecomb Children's Centre |

| Strategic Action  | Target  | Current Position  | Lead Partner   |
|---|---|---|--|
| Involve Traveller groups in education services development  | Improve participation and uptake of 2 yr old nursery funding  | 2014 Traveller Women's group formed. Adviser attends. Consultation both formal and informal. Uptake of 2 year funding - 2013/2014. 3 children each year | Health Visitors, Early Years Coordinator, Traveller Education Team               |
| To provide training to early years settings, children's centres, school staff re good practice in working with GRT families as both bespoke and part of LEAs training programme | Increased skills and confidence of EYs staff in working with GRT families – result increase in uptake of mainstream provision | Training part of Council's Workforce and Development annual programme, plus bespoke training to schools   | Traveller Education Team   |
| To arrange nursery places when necessary to newly arrived families and support child into nursery, to provide teaching support to children with an identified need              | Increased uptake of Early Years Educational Entitlement (EYEE)  | 2013/14 – 11 children accessed nursery  | Traveller Education Team   |
| <b>Goal 13</b> <b>Improve further the awareness in schools about Traveller History and Culture</b>  |   |   |  |
| Offer cultural awareness training to all educational establishments and to embed this in LEAs rolling training programme  | Uptake of training  | Course well attended with request for full day training   | Traveller Education Team, Healthy Schools Team                                   |
| Promote national initiatives such as Gypsy Roma Traveller History Month and encourage schools to participate  | Schools participation in GRT History Month  | Participation in Holocaust Memorial Day. GRT History month June and participation in national competition   | Traveller Education Team, Partnered with Traveller Organisations                 |
| Involve Traveller groups in education services development of cultural awareness and equalities training  | Travellers Participation in training  | Travellers views (via DVD) in training programme plus inclusion of delegates with a GRT heritage  | Traveller Education Team, Partnered with Traveller Organisations and individuals |
| Continue to contribute to schools curriculum diversity by providing lesson models, resources and artefacts.   | Culturally reflective curriculum in schools with Traveller children on roll   | Integral part of peripatetic Traveller teacher's remit.   | Traveller Education Team, Healthy Schools Team                                   |
| Information for schools updated and available via website   | Schools have accessible resources   | Support for Traveller pupils and families in process of being re-evaluated and reorganised  | Traveller Education Team   |

## Strategic Outcome 4: Improve community cohesion

| Strategic Action  | Target   | Current Position  | Lead Partner                                  |
|---|--|---|---|
| <b>Goal 14    Increasing awareness of different cultures</b>                            |  |   |   |
| Develop a greater understanding amongst the media of Traveller issues                   | Ongoing work   | Work ongoing to support the Traveller team and provide a clear and consistent message. Joint comms approach is being developed with the Police  | Brighton & Hove City Council                  |
| Improve further the awareness in schools about Traveller History and Culture            | Various (see Goal 12)                                      | Ongoing: Various (see Goal 12)  | Traveller Education Team, and Traveller Orgs. |
| BHCC Promotion of GRT History Month   | June - annually  | Promoted Friends Families & Travellers' event as part of Gypsy Roma Traveller History Month   | BHCC Communities & Equality Team              |
| Run regular Councillor Traveller awareness sessions                                     | 2012 & 2013 (and every 2 years following elections)        | Traveller awareness sessions offered to each of the 3 political groups and provided at separate group meetings  | Brighton & Hove City Council                  |
| Traveller staff – workforce monitoring and action/support from BME Workers Forum        | Various as part of People Strategy and Implementation plan | Gypsy/Traveller category included in equalities monitoring template and staff equalities monitoring<br><br>Black & Minority Ethnic Workers Forum continues to be promoted by council                    | Brighton & Hove City Council                  |
| Improve Community Development Workers / Local Action Teams                              | July 2012 and ongoing                                      | New 3 year delivery of infrastructure, community development & community engagement commissioned in July 2014   | BHCC, Friends Families & Travellers           |
| <b>Goal 15    Involve Travellers and their advocates in service design and delivery</b> |  |   |   |
| Set up a Brighton & Hove Traveller Forum  | Spring 2013  | Group regularly meeting comprised of those likely to be living on the new permanent site with Housing, FFT, Education, Police and Community Safety. Invites extending to Health and Childrens' Services | Brighton & Hove City Council                  |



**Two Years On:**

*The Traveller Commissioning Strategy in Action 2013/14*

| Progress opportunities for supporting Travellers into work and learning            | To be determined                        | Work progressing with the Inclusion Team to identify individual learning needs and support in accessing classes                           | Brighton & Hove City Council                                 |
|--|---|---|--|
| <b>Strategic Action</b>  | <b>Target</b>                           | <b>Current Position</b>   | <b>Lead Partner</b>  |
| Involve Travellers in development and design of permanent site                     | Updated timescale. Throughout 2012-2014 | Travellers and Traveller groups continue to be consulted in the design and development of site.   | Brighton & Hove City Council                                 |
| Consult on procedures for Tolerated sites  | Subject to draft guidance               | Consultation on the toleration protocol competed with Travellers and their advocates  | Brighton & Hove City Council                                 |
| Involve Travellers in service development, cultural awareness, equalities training | Travellers participating in training    | DVD entitled "No Shame" will highlight the issues of local domestic violence experienced by Traveller women and support options available | Traveller Education Team, Schools/Nurseries, Traveller Orgs. |

**Goal 16**

**Effective management of unauthorised encampments**

|   |  |  |  |
|---|--|--|--|
| To review and update the Operation Monza Tactical Plan                          | Annual review according to operational need  | Operation Monza reviewed. The PIER plan continues under headings of Prevention, Intelligence, Enforcement and Reassurance. | Sussex Police  |
| To provide a dedicated full time Traveller Liaison Officer                      | Full time officer in post  | Brighton retains a full time Gypsy and Traveller Liaison Officer   | Sussex Police  |
| Ensure Section 61 and Section 62A CJ&POA 1994 applications comply with guidance | As far as possible all applications are to be considered by local Commanders to ensure consistency | Both Section 61 and 62A powers used over reporting period. This process involves full reporting to a Superintendent        | Sussex Police  |
| Provide a consistent response to all unauthorised encampments                   | Develop a joint Sussex Wide Unauthorised Encampment Protocol                                       | Consistent approach being applied to unauthorised encampments  | Sussex Police, Brighton & Hove City Council, East & West Sussex councils |
| Pro-actively liaise with any settled community affected by an encampment        | Ongoing  | The unauthorised encampment community engagement plan sets out responsibilities for Police                                 | Brighton & Hove City Council   |

| <b>Strategic Action</b>  | <b>Target</b>  | <b>Current Position</b>   | <b>Lead Partner</b>                          |
|--|--|---|--|
| Expand Operation Monza into a joint approach   | Council Traveller Liaison Officer to accompany Police on daily visits to sites | The full time Gypsy and Traveller Liaison Officer remains in post   | Sussex Police & Brighton & Hove City Council |
| Provide necessary support the those residing on an unauthorised encampment                             | Ongoing  | The Traveller Liaison Team is developing a Joint Support Protocol to formalise the working with other support services  | Brighton & Hove City Council                 |
| Take appropriate action to move on an encampment based on community impact and Traveller needs         | Ongoing  | The site assessment and community impact assessments are carried out upon arrival of a new encampment   | Brighton & Hove City Council                 |
| Work across the region to share good practice  | To work through the new Sussex Joint Local Authority Traveller Forum           | Good practice across the region is shared with other professionals working with Travellers at quarterly Pan Sussex Gypsy and Traveller meetings.<br><br>Director level Regional Strategic Meeting to discuss provision for Travellers and responses to unauthorised encampments due to be held in December 2014 | Brighton & Hove City Council                 |
| <b>Goal 17    Ensure sensitive sites are protected</b>   |  |   |  |
| Develop a corporate proactive approach to the protection of sensitive sites within available resources | To be developed during 2012/13   | Externally funded bee banks aimed at improving wildlife are being used which also make access harder. The Traveller Liaison Team will be piloting the use of mobile cameras to deter trespass and evidence criminal damage  | Brighton & Hove City Council                 |
| Assess sites on an ongoing basis in response to unauthorised use                                       | Ongoing monitoring of sites  | Following the works carried out previously to Withdean Park, Greenleas recreation ground, the Ladies Mile nature reserve, Carden Park and Hollingbury Park, there have been no further works completed e.g. major new barriers erected  | Brighton & Hove City Council                 |

| Strategic Action   | Target  | Current Position  | Lead Partner                         |
|--|---|---|--------------------------------------|
| <b>Goal 18 Tackling crime, anti-social behaviour and nuisance</b>  |   |   |                                      |
| To review and update the Operation Monza Tactical Plan   | Annual review according to operational need                           | Operation Monza has been reviewed and a more flexible and responsive plan has been developed which supports council and the community reassurance plan  | Sussex Police                        |
| To provide a dedicated full time Traveller Liaison Officer   | Full time officer in post   | The full time Gypsy and Traveller Liaison Officer remains in post   | Sussex Police                        |
| Provide a prompt, efficient and sustainable waste collection service that tackles fly-tipping  | New contract to start August 2012                                     | Service continues with the 6x 1100 litre waste bins emptied once a week   | Brighton & Hove City Council         |
| <b>Goal 19 Tackling racism, sexism and homophobia</b>  |   |   |                                      |
| Developing new ways to encourage the reporting of crimes and incidents will be taken forward by community safety services and included within a work programme to develop community based reporting centres throughout the city for hate crimes. | Work to be undertaken during 2012 and will be completed by March 2013 | A single case has been reported by a traveller family directly to the Community Safety Casework team and is being supported<br><br>Direct outreach work and contact with the traveller communities are being used to increase trust and confidence, create awareness of the reporting mechanisms, and support available in the city to increase reporting | Joint Community Safety Delivery Unit |
| <b>Goal 20 Develop a protocol for addressing Van Dwellers who are often mistaken for Travellers</b>  |   |   |                                      |
| Develop protocol, Equality Impact Assess, consult, launch  | To be developed in 2012/13  | A multiagency approach is being piloted which will develop into the protocol. Research and review of legal powers is ongoing. Aiming to deliver spring 2015   | Brighton & Hove City Council         |

# Housing Strategy Team

Brighton & Hove City Council,  
4<sup>th</sup> Floor Bartholomew House,  
Bartholomew Square, Brighton BN1 1JE

e: [housing.strategy@brighton-hove.gov.uk](mailto:housing.strategy@brighton-hove.gov.uk)  
w: [www.brighton-hove.gov.uk/housingstrategy](http://www.brighton-hove.gov.uk/housingstrategy)



Brighton & Hove  
City Council